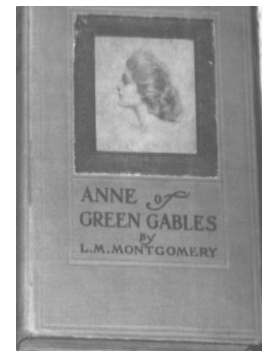




The Shining Scroll

*newsletter for the
L.M. Montgomery
Literary Society
Summer 1999*

**Founded in 1991
by Carolyn Strom Collins
and Christina Wyss Eriksson**



125th ANNIVERSARY OF LMM



*Lucy Maud
Montgomery*

125 YEARS

The L. M. Montgomery Literary Society
of Minnesota will observe the
125th anniversary of the birth of
L. M. Montgomery on
November 30, 1999.

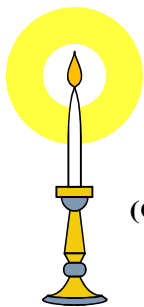
Members of the Society and the public are invited to the
Kerlan Collection Reading Room in the **Walter Library
of the University of Minnesota at 3:00** in the
afternoon to take part in the commemoration. Readings
from LMM's journals, fiction, and poems will make up part
of the program.



LMM Anniversary Memorial Donation

CAROL GABOURY COLLECTION

(Carol Gaboury was a member of the L.M. Montgomery Literary Society. We asked her husband, Jim Gaboury of New Berlin, Wisconsin, to tell us about her LMM collection)



The Lucy Maud Montgomery collection of my late wife, Carol Gaboury, is now in the possession of Wilda Clark of Uxbridge, Ontario who is holding it for the time when the collection will be placed in the Leaskdale Manse Museum after it has been renovated (probably in the year 2003). Shortly after Carol's death, in July of last year, I had to decide what I wanted to do with her LMM collection. I knew I wanted to make sure whatever I did with the collection it would be something I felt she would approve of also. From time to time, she had mentioned her desire that the collection would be placed where it would be put to best use. After much deliberation along with input from Wilda Clark and Carolyn Collins, I felt it would honor Carol the most to have her collection placed into the Leaskdale Manse Museum. I am sure if she were here, she would concur in my decision.

Carol, had an extensive collection of books by and about L.M. Montgomery, as well as scrapbooks which contained pictures of LMM, reviews of her works, photocopies of her prose, poetry and short stories that Carol was able to find in her many searches through magazines and newspapers at various libraries in the U.S. and Canada.

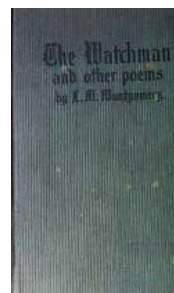
The oldest book she had of the *Anne of Green Gables* book (she had 24 different editions) was the February, 1940 edition. Carol received this one as a gift from her parents on her tenth birthday. Little did they realize what an effect that book would have on Carol and her life.

Her collection also contains a *Aunt Maud's Recipe Book*, a one act musical play by Hank Stinson of, "Emily of New Moon" and "The Blue Castle", a musical adapted and composed by Hank Stinson.

Carol owned *The Watchman and other Poems* (c. 1916), which she valued very highly and is now a treasured possession of a granddaughter of Wilda Clark because it belonged to Carol. She also had: first editions of *Emily of New Moon*, *Anne's House of Dreams*, *Anne of Avonlea*, *Anne of Ingleside*, *Emily's Quest*, *Further Chronicles of Avonlea*, *Jane of Lantern Hill* (an Australian edition), *Pat of Silver Bush*, *Rainbow Valley*, *Rilla of Ingleside*, *The Blue Castle* (Australian edition), *The Road to Yesterday*, and *A Tangled Web*. There were also Canadian Favourites editions. Other books Carol had in her collection were about LMM and her works by writers Wilmshurst, Ferns & McCabe, Rubio & Waterston, Epperly and Wiggins.

Carol, through her many years of researching, compiling information about LMM, many trips to libraries, new book stores and used book stores, was able to have an abundant collection of books and other materials by and about Lucy Maud Montgomery. Because of this, the results of her efforts will be available to those who have an interest in LMM and her works when the "Manse" opens after its renovation.

Most of Montgomery's early editions are valuable today, selling for \$300-\$800. **"The Watchman and other Poems"** was published by McClelland, Goodchild & Stewart of Toronto in 1916. It is a rare find in a bookstore for the serious LMM collector. If a copy can be found, it is typically priced for at least \$800 US or more than \$1000 CAN.



Each summer, members of the L.M. Montgomery Literary Society are fortunate enough to visit Prince Edward Island and generously share their experiences and photographs at our meetings. Carolyn Collins has been able to spend much of this summer on the Island and has many timely happenings to report for the 125th anniversary year of the birth of Lucy Maud Montgomery.

Montgomery Anniversary Summer on Prince Edward Island

by Carolyn Collins



How does seven weeks on Prince Edward Island in the middle of "Anne Country" sound? For me, it is heaven! And that is exactly what I was privileged to experience for most of July through the first week of September this last summer.

Of course, there was some hard labor involved to justify this rather unorthodox venture. I hosted six weeks of so-called Anne day camps, entitled "Ribbons and Roses," at the L. M. Montgomery Heritage Museum in Park Corner. At each one-day session, Anne-fans learned more about LMM while making their own straw hats adorned with roses and buttercups, re-enacting the "Lady Elaine" scene from AGG right on the shores of the Lake of Shining Waters, sipping after noon tea, and learning how to make rosebud sachets, button strings, and Victorian paper lace ornaments. Let me assure you that there are so many true Anne-fans out there from all over! I met and got to know folks from Texas to Japan, grandmothers to elementary-school-age girls. It was wonderful.

In addition to my program, I also took my turn as a tour guide inside the Montgomery Museum, giving me the opportunity to meet scores of other people from many countries who had come to the Island to learn more about LMM (Literary Society member Joan O'Brien and her daughter Peggy surprised me with a visit one day!). Many visitors were surprised to learn that there are five major sites relating to her and her life: Green Gables, of course, plus the Birthplace in New London, the Macneill homestead in Cavendish, "Silver Bush" (the Campbell home in Park Corner), and her Grandfather Montgomery's home that is now the LMM Heritage Museum. The latter has been open just six years, so if you visited the Island before 1993, you would have missed it (unless you stayed there when it was a tourist home). There are lots of interesting items to see there (the original "Magog" that LMM wrote about in the "Anne" books, LMM's grandmother's rosebud tea set that inspired the one Anne wanted to use for Diana's infamous visit, and many other Montgomery-family heirlooms from the days LMM knew the home).

This year I was on the Island long enough to experience the Kensington Harvest Festival, nearly a week of community-sponsored activities that reminded me of our county fairs in the US. There were exhibitions of the best flowers and vegetables grown by local residents, beauty contests, baseball tournaments, displays of area businesses, and even an Anne Look-Alike contest. And nearly every week there are "auction sales" or estate sales to attend. One such sale was held this summer at one of the few remaining stone houses left on the Island. These red sandstone houses were built early in the Island's history, usually in the early 1800s. They are utterly charming and quite remarkable. What made the opportunity to see one up close, inside and out, even more meaningful to me was the chance to see the kind of house that LMM wrote about as Miss Lavendar Lewis' in *Anne of Avonlea*. She called it "Echo Lodge."

The Island was commemorating the 125th Anniversary of LMM's birth in several ways this summer. Some of the events I was able to attend were the LMM Interfaith Memorial Service at the Cavendish United Church, an afternoon tea in LMM's honour at Dalvay by the Sea, an exhibition of LMM's photographs at the Confederation Centre in Charlottetown, and a benefit concert for the LMM Land Trust at the Campbells' Anne of Green Gables Museum in Park Corner.

Mickey and Buddy Harwell reserved a table at the Kitchen Witch Tearoom in Long River for a gathering of kindred spirits one Sunday afternoon. Along with the Harwells and me, Carol Dobson and her cousin made it to "the Witch" in pouring rain to visit and compare notes on all things LM. Mickey even brought along some delightful gifts for everyone -- soaps and lotion scented in LMM's favourite fragrance, freesia.

Renewing friendships with old friends on the Island -- the Montgomery family, Edith Smith, Hank and Clara Williams, the Campbell family, Father Bolger, Ross and Margie Affleck, the Macneills, and so many more -- and getting to know some new Island folks was the best part of the summer. Everyone sends their regards to our LMM group in Minnesota!

L. M. MONTGOMERY ECUMENICAL MEMORIAL SERVICE

On the evening of August 22, Cavendish United Church held its annual L. M. Montgomery Ecumenical Memorial Service, this year in celebration of the 125th anniversary of LMM's birth (the church is located just a few hundred feet from the farm where LMM grew up). Representatives of four area churches led the service of hymns, prayers, and Bible readings. Passages from some of LMM's works were read, a bouquet of flowers was presented in her memory, and the congregation joined in singing the "Island Hymn," whose verses were written by LMM in 1909.

Norman and Elaine Campbell, who wrote the lyrics to the *Anne of Green Gables Musical* that has played in Charlottetown for over thirty-five years, were guest speakers for the service. They related some of their experiences in their involvement with the musical, as well as other projects, and their connection with Prince Edward Island. After the service, the congregation was invited to enjoy an elaborate "lunch" - sandwiches, salads, cookies, cakes and punch -- prepared by volunteers and beautifully served in the church's reception room.

AFTERNOON TEA AT DALVAY BY THE SEA

On Saturday, August 7, *Victoria Magazine* and Dalvay by the Sea Hotel sponsored an elegant afternoon tea in honour of the 125th Anniversary of Lucy Maud Montgomery.

Guests were served at white linen-covered tables in the Hotel's stunning new sun porch dining room. While a variety tea sandwiches and sweets were passed and pots of steaming tea steeped, innkeeper Michelle Thompson spoke to the crowd, giving a brief history of the hotel itself and its connection to L. M. Montgomery.

Dalvay by the Sea was built about 1895 as the vacation home of industrialist Andrew Macdonald and was sold to Parks Canada. Dalvay, which has been a summer resort hotel since the 1930s, is the Island's only "seaside hotel" and is located inside the national park. In Kevin Sullivan's film, *Anne of Green Gables -- the Sequel*, Dalvay by the Sea was featured as the "White Sands Hotel." Tourists seek it out especially for this connection to Anne and LMM, if not to stay in or dine in the first-rate dining room, at least to photograph the hotel and its beautifully landscaped grounds.

AVONLEA VILLAGE OPENS IN CAVENDISH

One of the newest attractions in Cavendish opened this summer, phase one of an ambitious development called "Avonlea Village." It is a cluster of buildings in the idealized style of a late-nineteenth century village. Visitors enter through an old-fashioned train depot and can ride in a horse-drawn wagon to the different buildings that make up the village.

The Long River Church, the New London manse, and the one-room Belmont schoolhouse where LMM taught (1896-97) were moved to the site and refurbished. The church, one LMM occasionally attended, serves as an auditorium for nightly concerts showcasing Island performers. The school is open for tours and a costumed actress as LMM gives "classes" to tourists. The manse has been transformed into a gift shop.

There are more gift shops and concession stands to see, arranged along red-clay streets bordered by board sidewalks, and a few farm animals are free to roam through the village. Village workers wear clothing in the style of the late 1800s, adding to the illusion that visitors have of stepping back in time to the days when LMM lived nearby.

STANLEY BRIDGE HISTORY IS PUBLISHED



History of Stanley Bridge: Hub of the Universe has been published by the Stanley Bridge Community Historical Society. It is a fascinating account of the lively community between Cavendish and New London that LMM used as her model for "Carmody" in the Anne books.

Father Francis Bolger and others in the community put the 506-page book together. There are articles on many subjects including shipbuilding, the light house, the war years, agriculture, dairying, fox farming, blacksmithing, harness making, churches and cemeteries, community organizations, physicians, and entertainment. A large portion of the book is devoted to histories of families in the area and there are many photographs of Stanley Bridge as it evolved through the years.

One of the many articles that may be of interest to LMM fans is Tommy Gallant's account of finding the wreck of the Marco Polo in the Gulf of St. Lawrence, just near Cavendish. The famous sailing ship was wrecked there in 1883. LMM composed an essay about it and it was printed in the *Montreal Witness* in February of 1891. She received a copy of it while at her father's home in Prince Albert.

Some of the Marco Polo's cargo was salvaged at the time of the wreck, but in 1959, Gallant discovered that much of the ship was still there, under twenty-six feet of water. He managed to retrieve two large anchors that are now on display in St. John, New Brunswick, where the Marco Polo was built.

BENEFIT CONCERT FOR LMM LAND TRUST IS HELD

Island entertainers donated their talents in a benefit concert for the L. M. Montgomery Land Trust one evening this summer. The concert was held in the large barn on the Campbell farm in Park Corner, known nowadays as "The Anne of Green Gables Museum."

Catherine McKinnon and Patricia Murphy were the headliners for the show that included several other performers as well. Intermission featured an informal reception in the museum's tearoom, hosted by the Campbell family.

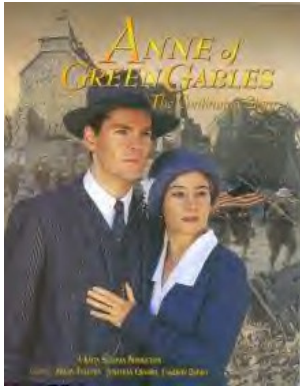


The Land Trust seeks to preserve the stretch of land on the North Shore of Prince Edward Island, especially in the Park Corner area, as closely as possible as LMM knew and loved it. The land is largely fields and pastures spread across the gently rolling hills with breathtaking views of the Gulf of St. Lawrence beyond. It is painfully obvious now, however, that this rich farmland is quickly becoming more valuable as "cottage lots" than it is as agricultural property.

As explained by Leonard Russell, president of the Land Trust board, the Trust seeks to purchase the only development rights to properties that come up for sale, not to own the land itself. Once the development rights have been secured, the Trust re-sells the land it has bought that can then continue to be used agriculturally.

Funds for the Trust are not so plentiful that every piece of property that comes up for sale can be purchased. Therefore, cottages and large homes are beginning to appear, very visibly, along this stretch of the North Shore. For the many LMM and PEI fans who would rather not see this area developed as residential properties, one way to help is to send contributions to the Land Trust.

...A great gesture for LMM's 125th anniversary!



NEW ANNE MOVIE FOR TV

Sullivan Entertainment has released a third TV movie, inspired by Montgomery's books. *Anne of Green Gables: The Continuing Story* will air on the Public Broadcasting System in the United States after it airs on CBC in Canada on March 5 and 6, 2000. A synopsis can be found on the Sullivan web page at http://www.sullivan-ent.com/AnneIII_synopsis.htm

This treatment is very loosely based on Montgomery's *Anne* stories, borrowing only the characters and few story lines. Anne and Gilbert pursue their careers in New York City until Gilbert enlists as a medical officer in World War I. Anne searches for him in Europe when he is listed as missing in action.

From *Ingleside Impressions*

Cavendish Cottages -- a limited edition "windowsill village" depicting the five most well-known houses on PEI related to L. M. Montgomery -- is now available from Ingleside Impressions.

The houses -- Green Gables, Macneill Homestead, LMM Birthplace, Silver Bush, and Grandfather Montgomery's home -- were handpainted by Marilyn Runyon, creator of the collectibles known as Sadie Binks World, and transferred to half-inch wood pieces, then cut and finished by hand. A brief history of each house appears on the back of each piece.

LMMLS members can purchase the houses individually for \$15.95 or as a set for \$75, (plus 6.5% MN tax and \$2.00 for shipping and handling) from Ingleside Impressions.

Ingleside Impressions' **Gog and Magog** replicas continued in popularity this year after their introduction in 1998. The three-inch high china dogs are made on PEI of PEI clay by Cavendish Figurines and are exact replicas of the green-and-white spotted china King Charles spaniels that resided in LMM's grandfather Montgomery's home. She was so enthralled by the dogs that she searched for her own set while honeymooning in England and later wrote them into the Anne books. The original Magog (Gog was broken over 100 years ago) still belongs to the Montgomery family and can be seen at the LMM Heritage Museum in Park Corner.

The replicas are available as figurines, salt-and-pepper shakers, and Christmas ornaments. The figurines and salt-and-peppers are sold in pairs (\$24) and the Christmas ornaments, with green velvet ribbon hanging loops, are sold individually for \$15. A "Story of Gog and Magog" card accompanies each order. Sales tax of 6.5% and \$3.00 per set for shipping and handling should accompany each order.

Orders for the Cavendish Cottages and Gogs and Magogs should be sent to Ingleside Impressions, 1603 Northrop St., St. Paul, MN 55108, with checks made out to "Ingleside Impressions." [Portions of the proceeds from Ingleside Impressions sales are donated to the LMM Land Trust.]

This document was created with Win2PDF available at <http://www.win2pdf.com>.
The unregistered version of Win2PDF is for evaluation or non-commercial use only.
This page will not be added after purchasing Win2PDF.